

Vehicle Information

ORA 1101

NISSAN

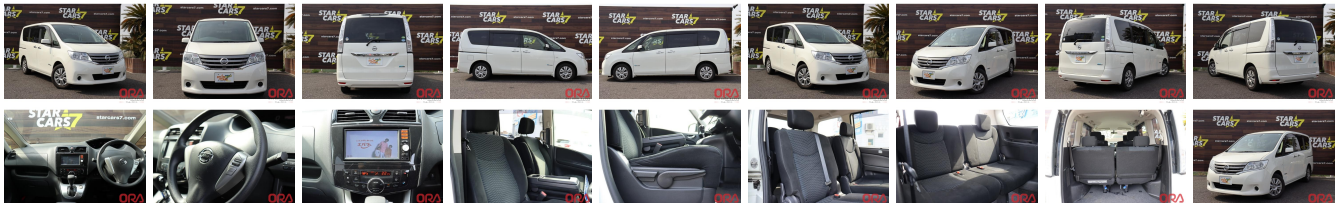
First Registration Year: 2013-04
Manufacture Year: 2013-04

Model: SERENA 20X S-HYBRID
Grade: 4.5
Fuel: Hybrid
Drive Train:

Chassis No: HC26-09****
Engine:
Seats: 7

Transmission: Automatic
Mileage: 81,000
Engine Capacity: 2,000
Color: PEARL

Exterior:
Interior:



Vehicle Options:

| | | | |
|------------------|------------------------|----------------|--------------|
| Pwr Steering | Pwr Wind | Pwr Mirrors | Center Lock |
| Air Cond | Reverse Camera | Pwr Slide Door | Easy Closer |
| Cruise Control | ABS | Air Bag | Fog Lamps |
| HID Head Lamps | LED Head Lamps | Spare Key | Remote Key |
| Push Start | Seat Heater | Pwr Seat | Leather Seat |
| Floor Mat | Sun Roof | Alloy Wheels | Grill Guard |
| Rear Wiper | Rear Spoiler | Stereo | Navi/TV |
| Car CD | Car MD | AUX | Spare Tire |
| Spare Tire Case | Puncture Repairing Kit | Tool | Jack |
| Operators Manual | Maint. Record | | |

\$4,500