

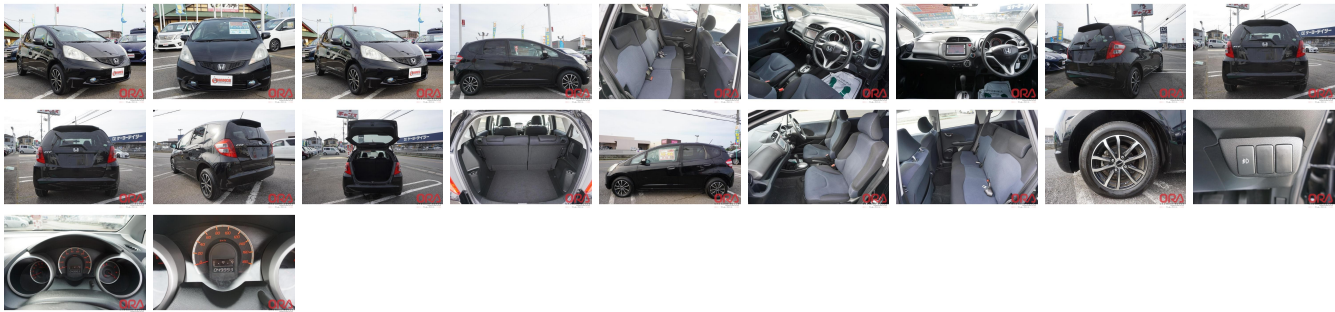
Vehicle Information

ORA 6109

HONDA

First Registration Year: 2010-08
Manufacture Year: 2010-08

Model: FIT **Chassis No:** GE6-130**** **Transmission:** Automatic **Exterior:**
Grade: 4.0 **Engine:** **Mileage:** 50,000 **Interior:**
Fuel: Petrol **Seats:** 5 **Engine Capacity:** 1,300
Drive Train: 2WD **Color:** BLACK



Vehicle Options:

| | | | |
|------------------|------------------------|----------------|--------------|
| Pwr Steering | Pwr Wind | Pwr Mirrors | Center Lock |
| Air Cond | Reverse Camera | Pwr Slide Door | Easy Closer |
| Cruise Control | ABS | Air Bag | Fog Lamps |
| HID Head Lamps | LED Head Lamps | Spare Key | Remote Key |
| Push Start | Seat Heater | Pwr Seat | Leather Seat |
| Floor Mat | Sun Roof | Alloy Wheels | Grill Guard |
| Rear Wiper | Rear Spoiler | Stereo | Navi/TV |
| Car CD | Car MD | AUX | Spare Tire |
| Spare Tire Case | Puncture Repairing Kit | Tool | Jack |
| Operators Manual | Maint. Record | | |

\$1,550